



MEASURING YOUR KITCHEN IS SIMPLER THAN YOU THINK!

Gather your materials and ask for a helping hand. You will need the following items:

- Tape Measure
- Graph Paper (provided)
- Pencil
- Camera or Smartphone

TIPS: Pick a starting point (corner on the left side of the room) and work your way around the room clockwise. First draw the shape of the room including any alcoves, bump outs, etc. Measure each wall from end to end for overall dimensions, as well as, individual sections.

Example: Left corner to left of the window molding, then the window including the molding thickness, then from the right side of the window molding to the right corner or end of the wall.

Measure all walls, windows and doorways in inches.

Example: Wall is 10ft 2in = 122 inches

When you measure windows and doorways, please include the width of the molding in those dimensions.

Example: If your window is 36" wide and the molding is 2.5" on each side, you would add $36 + 2.5 + 2.5 = 41$ " for that window on your sketch.

Note: if you are replacing your existing molding to molding that is a different width, please make sure you only consider the new and correct size molding.

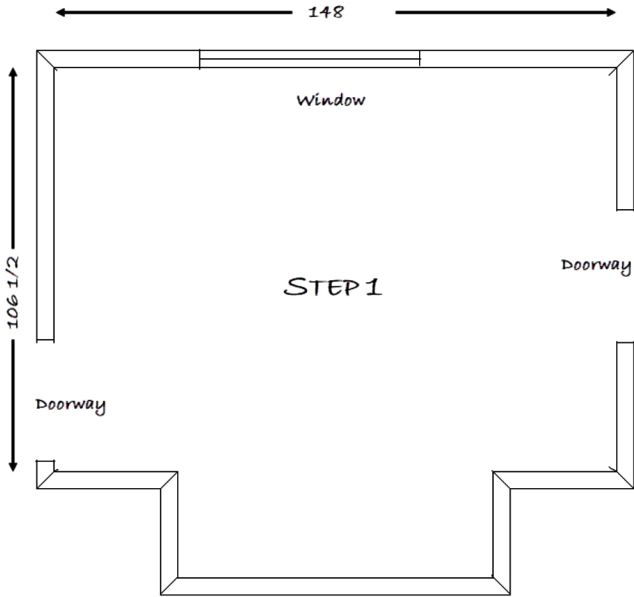
Please make note and give locations of any obstacles like a bump out in the wall (a pipe-chase), any baseboard heat, AC vents, outlets, wall switches, plumbing and/or gas lines that we need to work around.

If you are planning to modify or relocate any walls, windows or doorways, only submit a plan of the new layout. If you have architectural blueprints, make a clear copy. Be sure to write the dimensions as they will no longer be to scale when you submit them.

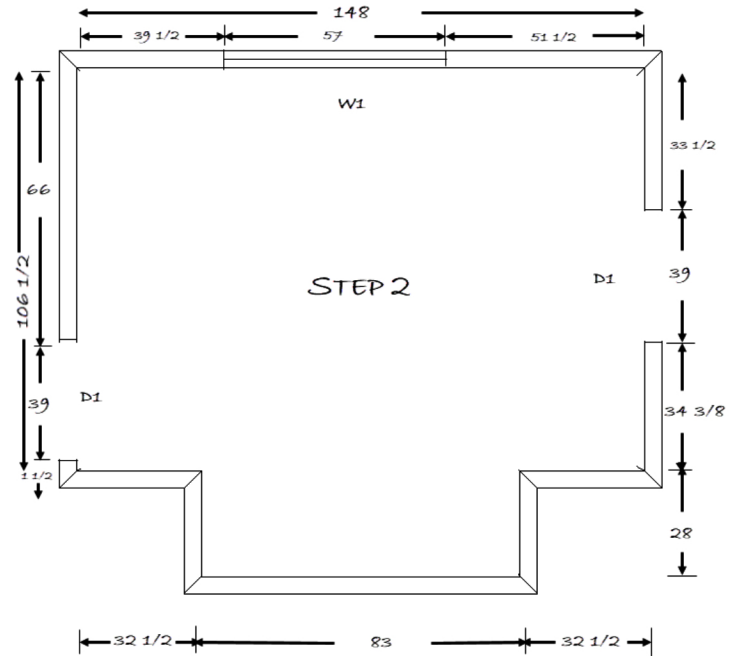
Hand drawings are perfectly acceptable! Use the graph paper included on the last page.

FOLLOW THESE 3 SIMPLE STEPS BELOW

STEP 1: Draw the overall shape of the room including windows, doors and overall dimensions.

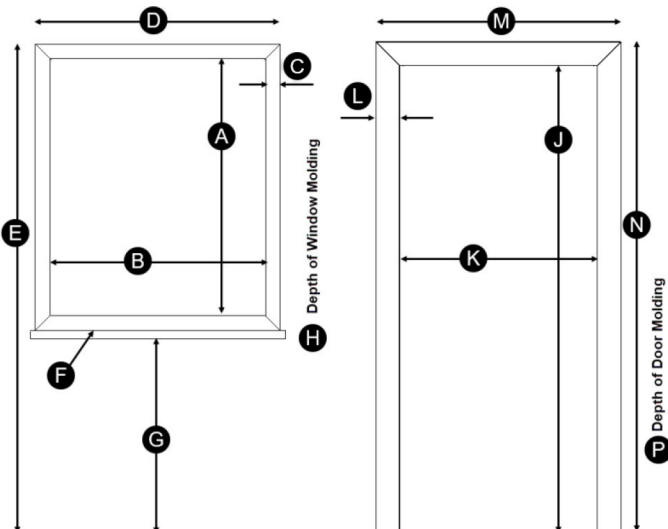


STEP 2: Measure all interior dimensions. Note: Window & Doorway dimensions include the widths of the molding.



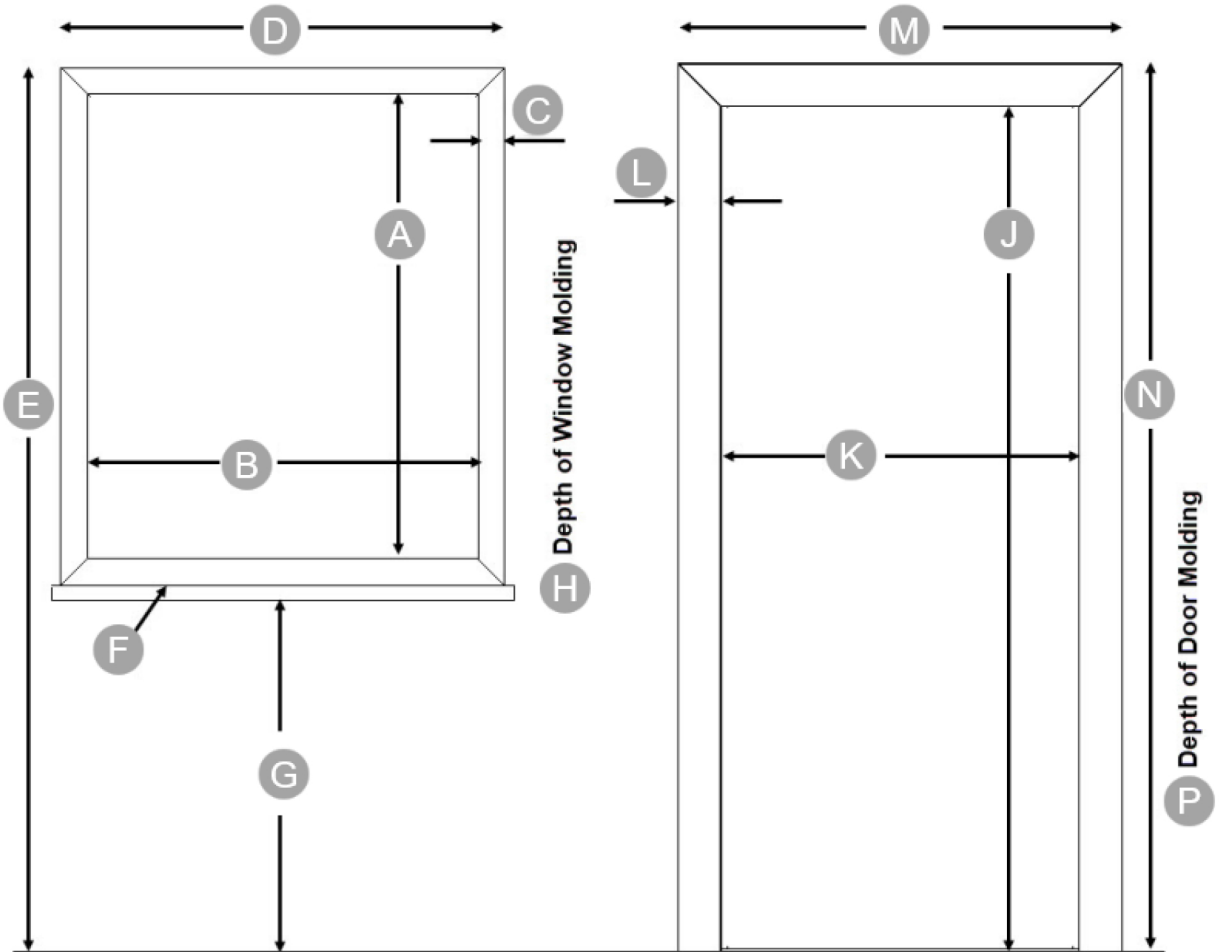
STEP 3: Window and Door Detail. Number each window and door on the floor plan drawing to correspond with the numbers on the chart like the example below. If you have multiple windows or doors with the same size, you may use the same ID number for all such units. Be sure to mark your floor plan accordingly.

EXAMPLE:



No.	A	B	C	D	E	F	G	H
W1	34	52-1/2	2-1/4	57	82-1/4	3	43	3/4
W2								
W3								
W4								
No.	J	K	L	M	N	P		
D1	80	34-1/2	2-1/4	39	82-1/4	3/4		
D2								
D3								
D4								

WINDOW AND DOOR DETAIL CHART



No.	A	B	C	D	E	F	G	H
W1								
W2								
W3								
W4								
No.	J	K	L	M	N	P		
D1								
D2								
D3								
D4								

CONSUMERS

KITCHEN & BATH *Specialists*

