



Care and Cleaning

Wondering how to keep your new cabinets looking beautiful? We can help! Follow these instructions: Dust them periodically, keep them clean by using a soft lint-free cloth, — or a microfiber cloth for laminate and high gloss cabinetry — AND THAT'S IT!

Cabinet Care



Need to fight some grime?

- Usually, a clean, soft cotton cloth —or microfiber cloth for laminate and high gloss cabinetry — dampened with warm water will do the trick!
- For extra grime fighting, a mild solution of dishwashing liquid (not dishwasher products) mixed with fresh, clean, warm water will take care of dirt and grease. 5% dishwashing liquid to 95% water is a good ratio.
- After cleaning your stained or painted cabinets, wipe them down with a clean, damp cloth and be sure to dry wet/damp surfaces with another clean soft cloth.
- Laminates and high gloss materials **MUST** be dried with a microfiber cloth to avoid scratches.



What about splatters and spills?

- Make sure to wipe them up quickly! Then, clean as needed with warm water or the mild dishwashing liquid solution. Prolonged exposure to food, water and other liquids, as well as grease and oil splatters can cause permanent damage or discoloration to your cabinet's finish.
- Don't forget to dry after cleaning, using a soft, clean cloth for stained and painted cabinetry. Dry laminates and high gloss cabinets with a microfiber cloth.



Glass door care.

- Clean the glass by spraying an ammonia-free glass cleaner on a clean, soft, lint-free cloth or paper towel, and wiping down the glass. Don't spray glass cleaner directly on the glass to avoid seepage behind mullions or dividers, which could cause damage to the wood or other materials.



Should I polish or wax?

Neither!

- Your cabinets don't require waxing and we don't recommend it. Over time, waxing and polishing compounds may build up on cabinet surfaces forming a hazy, streaked or yellowed appearance. Wax build up is really hard to remove — no one has time for that!



Uh-oh. I have a nick on my wood or painted cabinetry.

- Touch-up kits are available to help hide surface damage on cabinetry. Your cabinet retailer can facilitate the purchase of the color-matched touch-up kit for your specific cabinetry.
- The kit will contain instructions on what to do — the touch-up pen will hide minor blemishes, while the tinted putty stick will fill deeper scratches, gouges or nicks.



Other things to be aware of.

- Don't drape damp dishtowels or clothes over your cabinet doors. Moisture can cause permanent damage, like peeling and discoloration to the cabinet finish. Dry wet surfaces immediately using a soft, clean cloth.
 - More on the topic of moisture: Wood will expand and contract based upon the amount of moisture in the home. Maintaining a consistent temperature and humidity level is key to cabinet health. Please refer to the Cabinet Warranty and The Homeowners Guide to Humidification sheets for details on proper humidity and temperature ranges.
- Heat from the self-cleaning oven feature is much greater than normal cooking temperatures, and could potentially damage surrounding cabinetry. While it is a rare occurrence, minimize the risk of cabinet damage by removing cabinet doors and drawers closest to the oven before using the self-cleaning feature.
- Direct sunlight tends to darken the color of natural wood products, with the exception of walnut, which will lighten. Painted wood surfaces and laminates, including high gloss are also suspect to fading or discoloration. Draperies or blinds are the best defense to shield cabinetry from direct sunlight.
 - Additionally, don't clean laminates and high gloss materials in direct sunlight.



Products to avoid.

- Harsh detergents, strong soaps, multi-purpose and abrasive cleaning products:
 - Tub and sink cleaners
 - Scouring powders and scouring pads
 - Steel wool or self-polishing waxes
- Sponges or dish cloths. They could contain particles that could scratch your cabinets, as well as food, oil residue or remnants of harsh cleaning solutions.
- Paper towels or similar products especially for high gloss cabinetry, due to the ease of scratching.
- Solvent based or petroleum based products such as mineral spirits, nail-polish removers or paint thinners.
- Ammonia, bleach or cleaning products that contain either ammonia or bleach.
- Silicone based cleaning, waxing or polishing products.

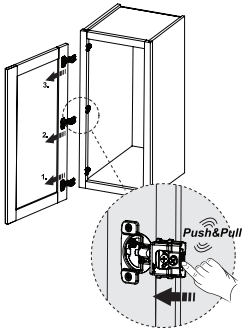
NOTICE TO INSTALLER!

The hinges installed on these cabinets feature a tool-less removal system which allows the door(s) to be removed from the cabinet **WITHOUT REMOVING THE SCREW** that attaches it to the frame.

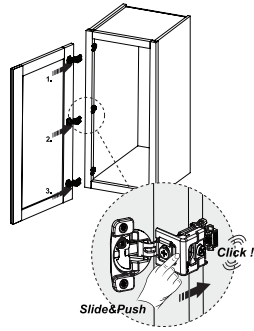
Please note: exceptions include, but are not limited to, specialty hinges such as those used on corner cabinets and other applications.

DOOR REMOVAL AND RE-INSTALLATION

Depress the tab and pull the door outward to separate the hinge cup from the plate that remains attached to the face frame.



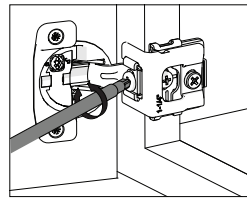
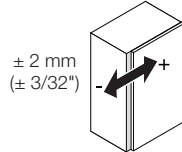
Door is easily re-installed by carefully sliding the hinge cup plate into the hinge receiver plate on the face frame until a click is heard, indicating it is locked into place.



DOOR ADJUSTMENTS

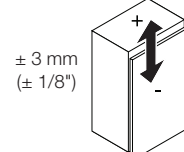
SIDE ADJUSTMENT

Achievable through cam adjustment

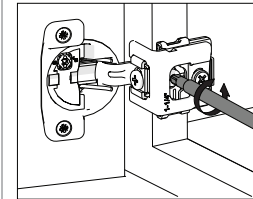


HEIGHT ADJUSTMENT

Loosen screw, align door and re-tighten screw

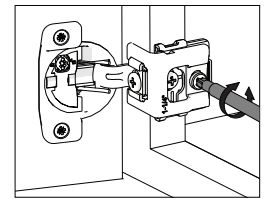
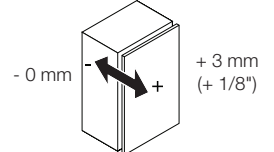


Recommended #8 x 3/4" x #2 Phillips



DEPTH ADJUSTMENT

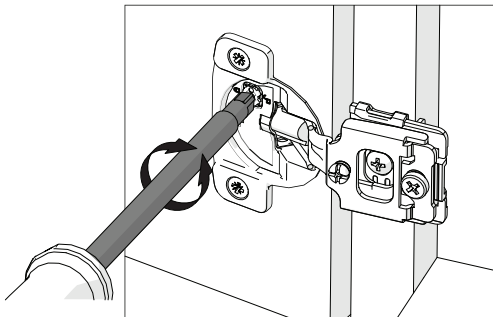
Achievable through cam adjustment



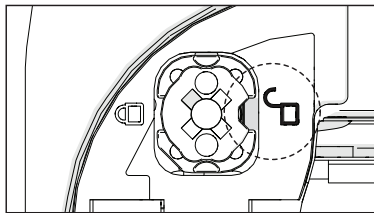
DEACTIVATION OF SMART STOP™ SELF-CLOSING TECHNOLOGY

STEP 1

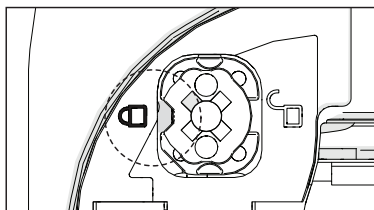
To deactivate Smart Stop™ self-closing technology, use a screwdriver to turn the gray cam 180° until the indicator is in the locked position.



ON

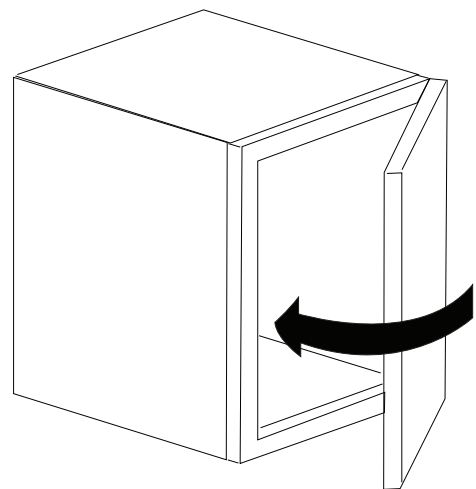


OFF



STEP 2

Close the door once to complete deactivation.



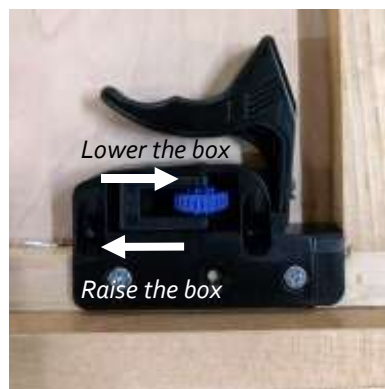
Note: For small/lightweight doors, the more hinges you deactivate, the more rapidly the door will close.

How To: Drawer Front Height Adjustment

STEP 1: Pull open the drawer to be adjusted



STEP 2: Rotate the adjustment wheel (blue) on the front locking clip to adjust the height of the drawer. Rotate towards the inside of the box to raise the drawer up. Rotate towards the outside of the box to lower the drawer. Height adjustment range is [0mm, +2.6mm].



STEP 3: Ensure the drawer front is aligned consistently left to right. Repeat step 2, if necessary.

